

# Type B9C Load Cell



## Short description

- Stainless steel IP67 dual shear beam load cell
- High accuracy
- Suitable for truck scales and other heavy weighing devices
- Sealed construction



## Available models

| Capacity | Accuracy | Full article description |
|----------|----------|--------------------------|
| 5Klb     | N3       | B9C-N3-5K-9B             |
| 10Klb    | N10      | B9C-N10-10K-9B           |
| 15Klb    | N10      | B9C-N10-15K-9B           |
| 20Klb    | N10      | B9C-N10-20K-9B           |
| 30Klb    | N10      | B9C-N10-30K-9B           |
| 40Klb    | N10      | B9C-N10-40K-9B           |
| 50Klb    | N10      | B9C-N10-50K-9B           |
| 60Klb    | N10      | B9C-N10-60K-9B           |
| 75Klb    | N10      | B9C-N10-75K-9B           |
| 90Klb    | N10      | B9C-N10-90K-9B           |
| 100Klb   | N10      | B9C-N10-100K-9B          |
| 150Klb   | N3       | B9C-N3-150K-9B           |
| 200Klb   | N3       | B9C-N3-200K-9B           |
| 250Klb   | N3       | B9C-N3-250K-9B           |

Specifications and dimensions are subject to change without notice and do not constitute any liability whatsoever.

# Type B9C Load Cell

## Detailed specifications B9C

|  |   |                    |   |                |
|--|---|--------------------|---|----------------|
| Accuracy class                         |   | N3                 | N10                                     |                |
| Output sensitivity ( = FS )            | mV/V                                    | 3.0 ± 0.003        |   |                |
| Maximum capacity ( E <sub>max</sub> )  | Klb                                     | 5, 150, 200, 250   | 10, 15, 20, 30, 40, 50, 60, 75, 90, 100 |                |
| Max.number of load cell intervals      | n <sub>LC</sub>                         | 3000               |   |                |
| Ratio of min. LC verification interval | Y = E <sub>max</sub> / V <sub>min</sub> | 7500               |   |                |
| Combined Error                         | %FS                                     | ≤± 0.0350          | ≤± 0.0230                               |                |
| Minimum dead load                      | Of E <sub>max</sub>                     | 0%                 |   |                |
| Safe overload                          | of E <sub>max</sub>                     | 150 %              |   |                |
| Ultimate overload                      | of E <sub>max</sub>                     | 300 %              |   |                |
| Zero balance                           | of FS                                   | < ± 1.0 %          |   |                |
| Excitation, recommended voltage        | V                                       | 5 ~ 12             |   |                |
| Excitation maximum                     | V                                       | 18                 |   |                |
| Input resistance                       | Ω                                       | 700 ± 7            |   |                |
| Output resistance                      | Ω                                       | 703 ± 4            |   |                |
| Insulation resistance                  | MΩ                                      | ≥5000 ( at 50VDC ) |   |                |
| Compensated temperature                | °C                                      | -10 ~ +40          |   |                |
| Operating temperature                  | °C                                      | -35 ~ +65          |   |                |
| Storage temperature                    | °C                                      | -40 ~ +80          |   |                |
| Element material                       |   | Stainless steel    |   |                |
| Ingress Protection (acc. to EN 60529)  |   | IP67               |   |                |
| ATEX classification (optional)         |   | II1G Ex ia II1C T4 | II1D Ex iaD 20 T73°C                    | II3G nL IIC T4 |

## Wiring

### Wiring:

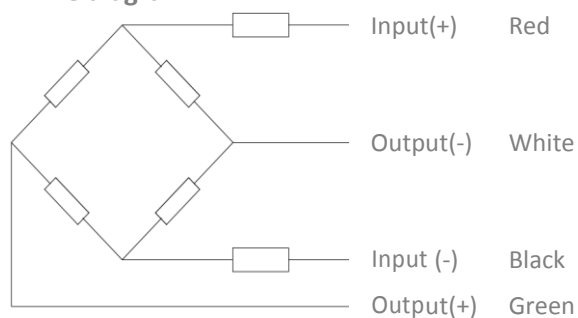
Shielded, 4 conductor cable.

Cable diameter for 5k – 20k: Ø5mm and for 30k – 250k: Ø8mm.

Standard cable length: 9m.

Shield not connected to element.

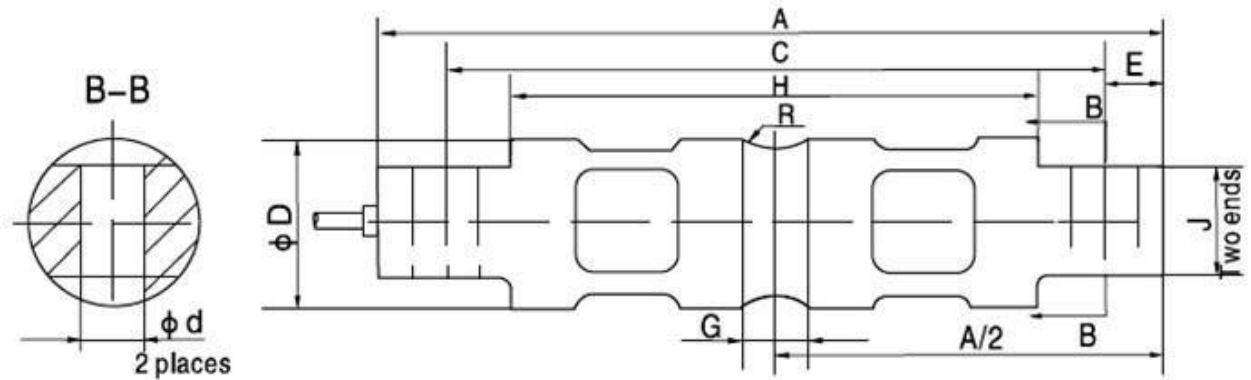
### 4-wire diagram



Specifications and dimensions are subject to change without notice and do not constitute any liability whatsoever.

# Type B9C Load Cell

Dimensions in mm

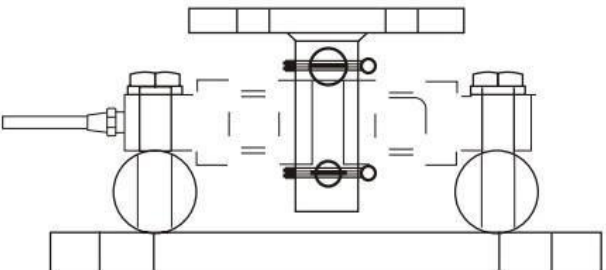
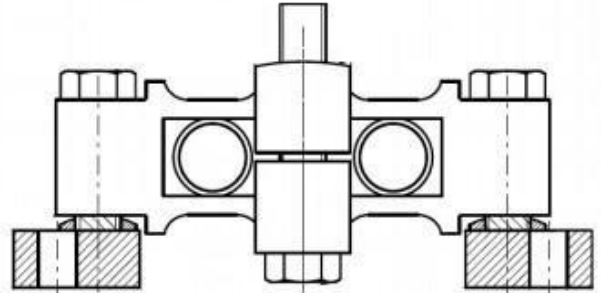
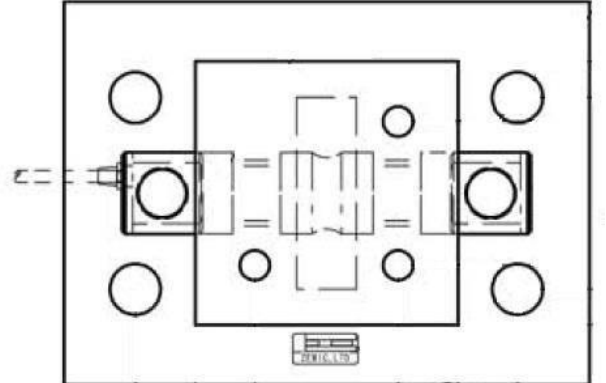


| Dimension Capacity | A     | C     | H     | G    | ØD    | J     | Ød   | R    | E    |
|--------------------|-------|-------|-------|------|-------|-------|------|------|------|
| 5Klb, 10Klb        | 206.2 | 174.6 | 133.1 | 15.7 | 43.2  | 28.4  | 16.7 | 12.7 | 15.7 |
| 15Klb, 20Klb       | 206.2 | 174.6 | 133.1 | 21.3 | 49.5  | 28.4  | 16.7 | 12.7 | 15.7 |
| 30Klb-75Klb        | 260.4 | 215.9 | 165.1 | 25.4 | 76.2  | 60.2  | 26.9 | 25.4 | 22.4 |
| 90Klb, 100Klb      | 285.8 | 241.3 | 190.2 | 31.0 | 88.9  | 63.5  | 26.9 | 38.1 | 22.4 |
| 150Klb             | 285.8 | 241.3 | 190.2 | 31.0 | 99.1  | 71.1  | 26.9 | 38.1 | 22.4 |
| 200Klb, 250Klb     | 408.9 | 330.3 | 254   | 31.7 | 136.6 | 116.8 | 39.6 | 50.8 | 39.4 |

Specifications and dimensions are subject to change without notice and do not constitute any liability whatsoever.

# Type B9C Load Cell

## Available accessories

|  |   |
|--|---|
| <p><b>HM-9-401-5-250Klb Mount</b></p> <ul style="list-style-type: none"><li>• Easy installation</li><li>• Compact construction</li><li>• Anti-reversal ability</li><li>• Alloy steel</li><li>• Using under heavy static or slight dynamic load</li></ul> |   |
| <p><b>HM-9-405-30-75Klb Mount</b></p> <ul style="list-style-type: none"><li>• Alloy steel</li><li>• No horizontal movement</li></ul>   |   |
| <p><b>HM-9-409-5-20Klb</b></p> <ul style="list-style-type: none"><li>• Easy installation</li><li>• Compact construction</li><li>• Anti-reversal ability</li><li>• Alloy steel</li><li>• Using under heavy static or slight dynamic load</li></ul>        |  |

Specifications and dimensions are subject to change without notice and do not constitute any liability whatsoever.